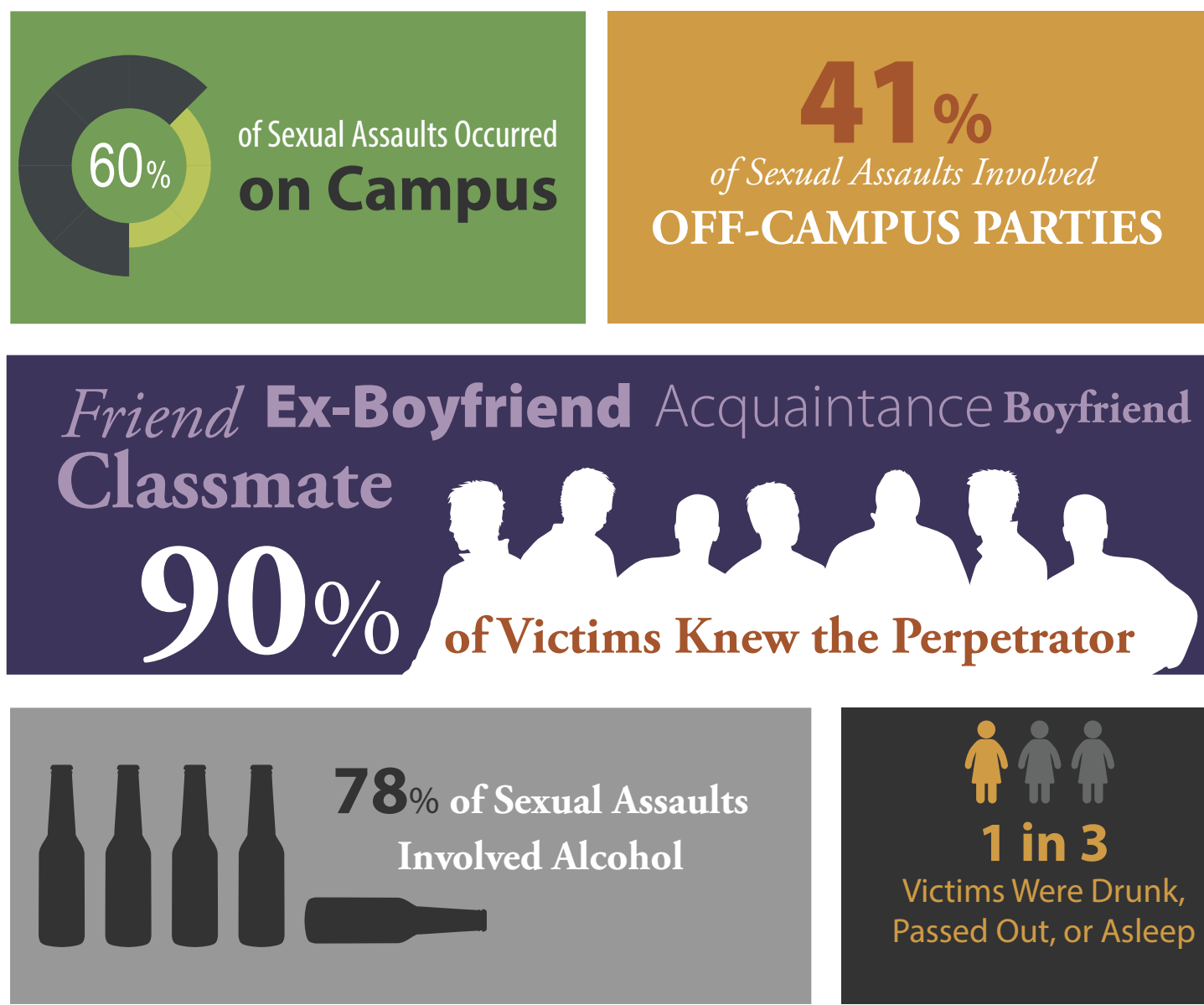


Facts From United Educators' Report Confronting Campus Sexual Assault: An Examination of Higher Education Claims

United Educators (UE) studied sexual assault claims filed between 2011 and 2013 by the institutions it insures. The study examines 305 claims from 104 colleges and universities that involved an alleged sexual assault and a student victim. A claim is defined as a demand for damages or an event that could give rise to legal action. This analysis highlights the complexity and characteristics of sexual assaults on college campuses. The findings presented below should be used to inform efforts to prevent sexual assaults and improve the institution's response when a sexual assault is reported.

The Circumstance of Campus Sexual Assault



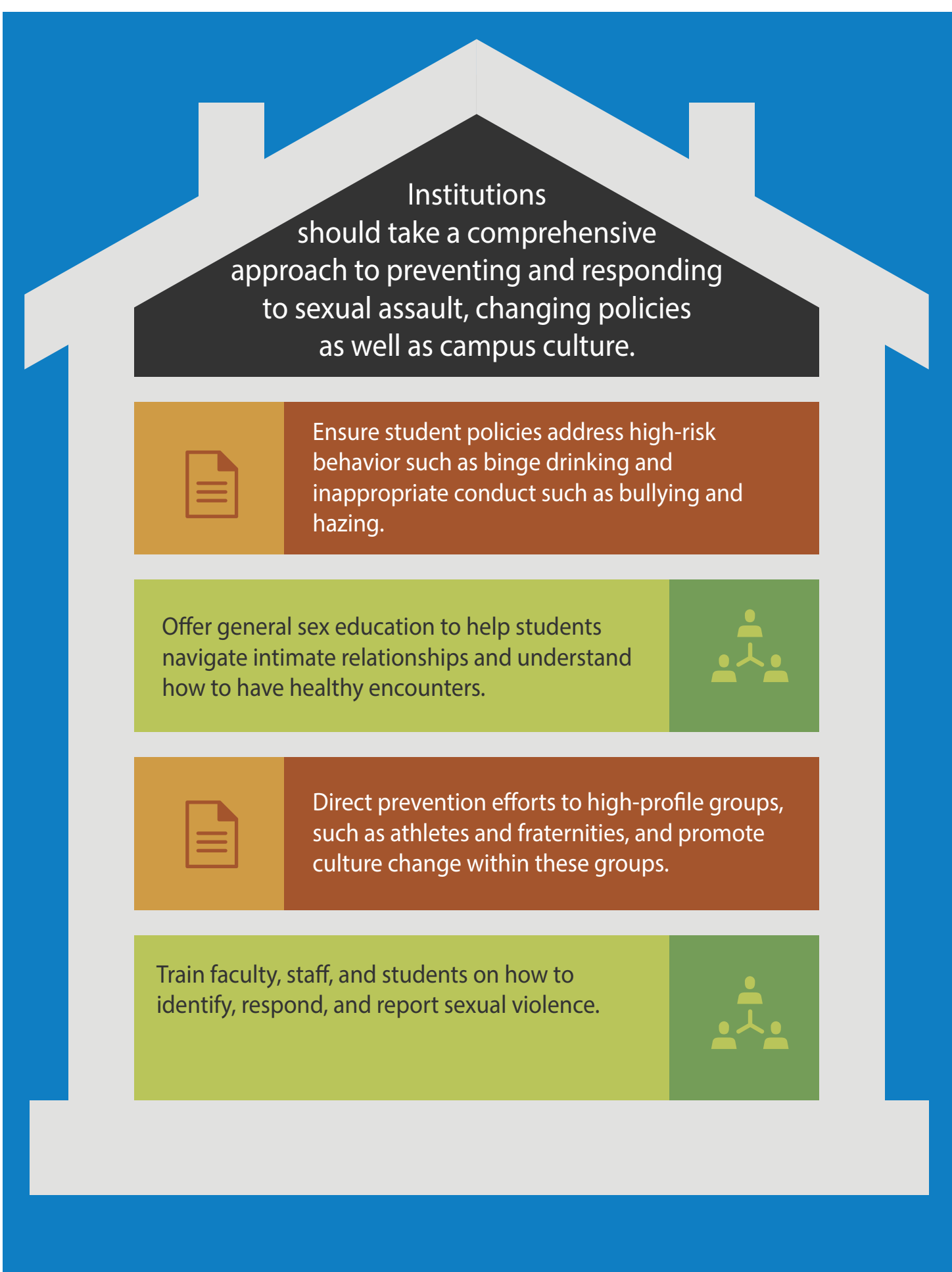
Victim Characteristics



Perpetrator Characteristics



Recommendations for Institutions



NOTE: Our use of the term "victim" rather than "survivor" is not intended to diminish the strength of those who came forward to report a sexual assault. Likewise, our use of the term "perpetrator" is not intended as acceptance of the truth of the allegations against an individual.